

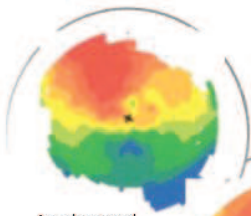
Understanding Your Contact Lens Care & Professional Fees

“**What are contact lens professional fees for?**”

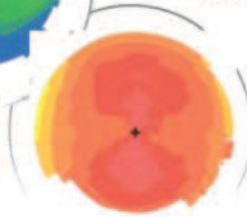
As a contact lens wearer, additional tests are done for you that are necessary to make sure your eyes are healthy, that your lenses fit properly, and to ensure that you are seeing as well as possible. Contact lens professional fees are for the extra testing, our doctor's expertise and the time taken by the staff and doctor each year to properly evaluate your contact lenses. Writing a prescription for your contact lenses places a certain amount of responsibility for the health of your eyes on the doctor. As result, your eyes and the fit of the lenses need to be checked annually.

Corneal topography is one example of a test done for contact lens wearers. With this computerized data we can detect any undesirable changes of the cornea caused by wearing contact lenses.

A second test uses the microscope to examine the fit of the contact lens and to assess the quality and quantity of your tears. Thirdly, pupil size is measured. Last, prescription measurements are done differently than those for glasses.



An abnormal, Distorted cornea



A normal cornea as shown by corneal topography

“**What types of additional tests are needed?**”

“**Isn't this part of my annual eye exam?**”

These contact lens related tests are done in addition to the eye examination. These are procedures that only need to be done for contact lens wearers, not for patients who do not wear contact lenses.

“**How much does it cost?**”

Depending on the type of lenses you wear and the complexity of your case, it costs anywhere from \$30 to \$170 annually for the contact lens evaluation fee.

“**Doesn't my insurance cover contact lens professional fees?**”

It depends on your plans coverage. Many insurance plans cover a routine eye exam which determines your glasses prescription and evaluates your eye health. Contact lens services are separate procedures often not covered by insurance.

